

DIRECTION GENERALE NUMERIQUE
ET SYSTEMES D'INFORMATION

④

DIRECTION DE L'INFORMATION GEOGRAPHIQUE

SERVICE TOPOGRAPHIE

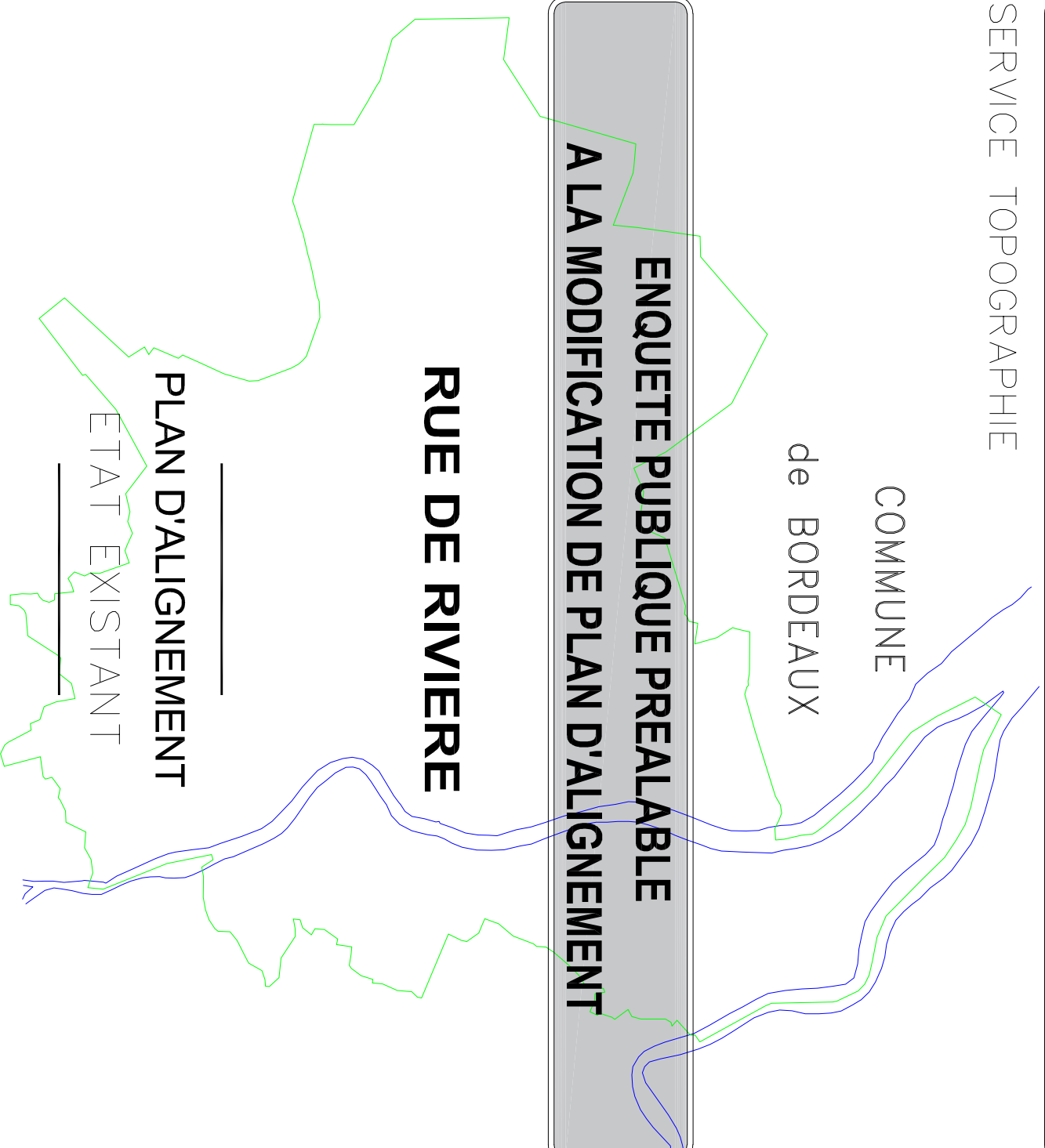
COMMUNE
de BORDEAUX

ENQUETE PUBLIQUE PREALABLE A LA MODIFICATION DE PLAN D'ALIGNEMENT

RUE DE RIVIERE

PLAN D'ALIGNEMENT

ETAT EXISTANT



NUMERO DE CLASSEMENT
9495

MODIFICATIONS

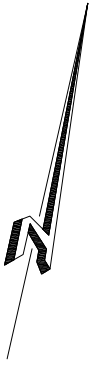
DRESSE LE : 02/04/2021
PAR : D.L.G.
Service Topographie
Centre de Définition des Alignements
lherve@bordeaux-metropole.fr

Tel : 05 56 99 84 84 – Poste 28472
Bordeaux Métropole
Esplanade Charles de Gaulle/BORDEAUX

D.L.G. Domitien BRACHET
PROJETEUR :

ADMISSION LE : 02/04/2021
LE CHEF DU SERVICE TOPOGRAPHIE
SYLVAIN COSTEMALE

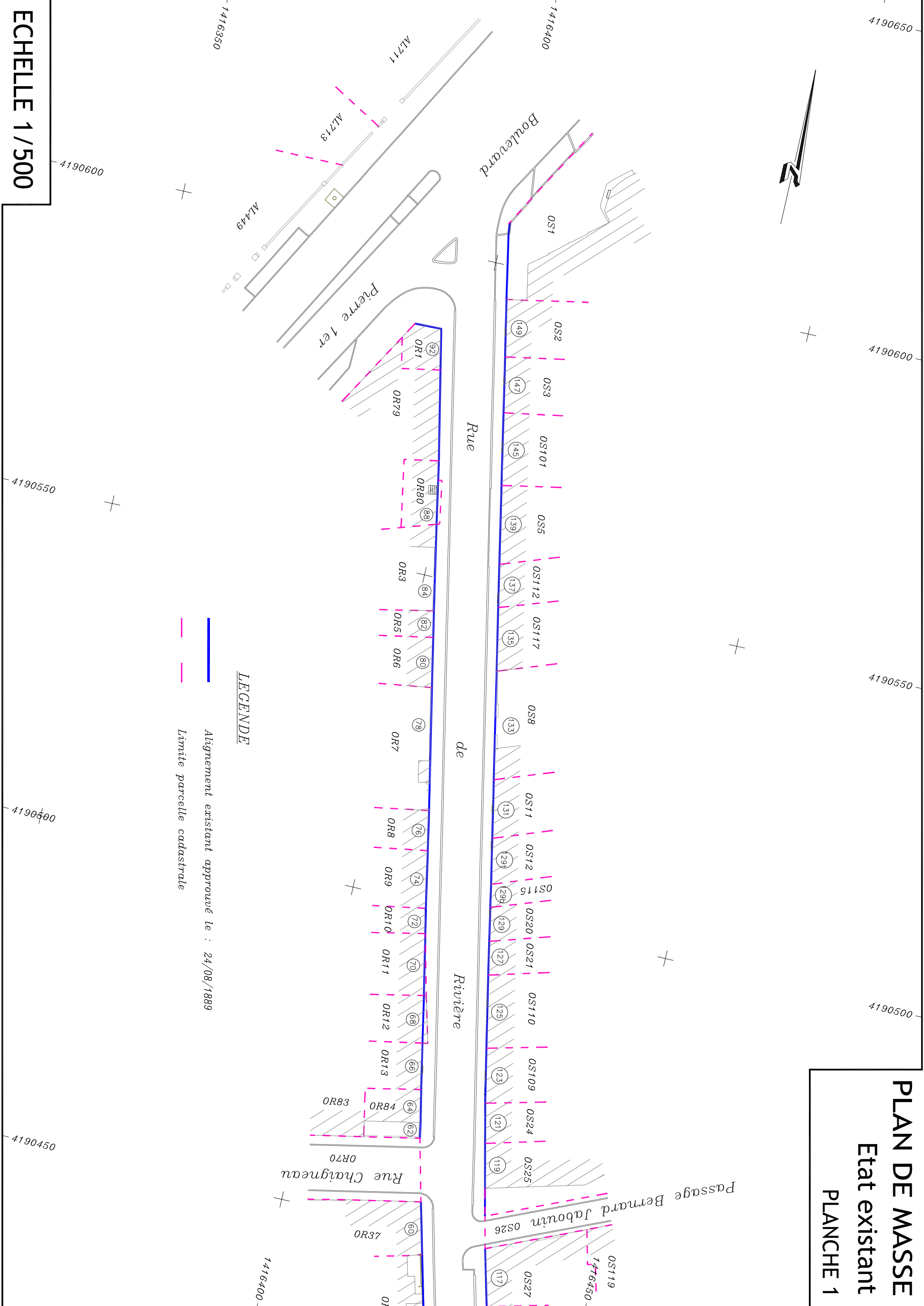
SERVICE DEMANDEUR : HANOU-GRANGER Carthine
RAPPELANT : 538939329
clara@bordeaux-metropole.fr
Dr. David Arnaud, P790002A1X



PLAN DE MASSE

Etat existant

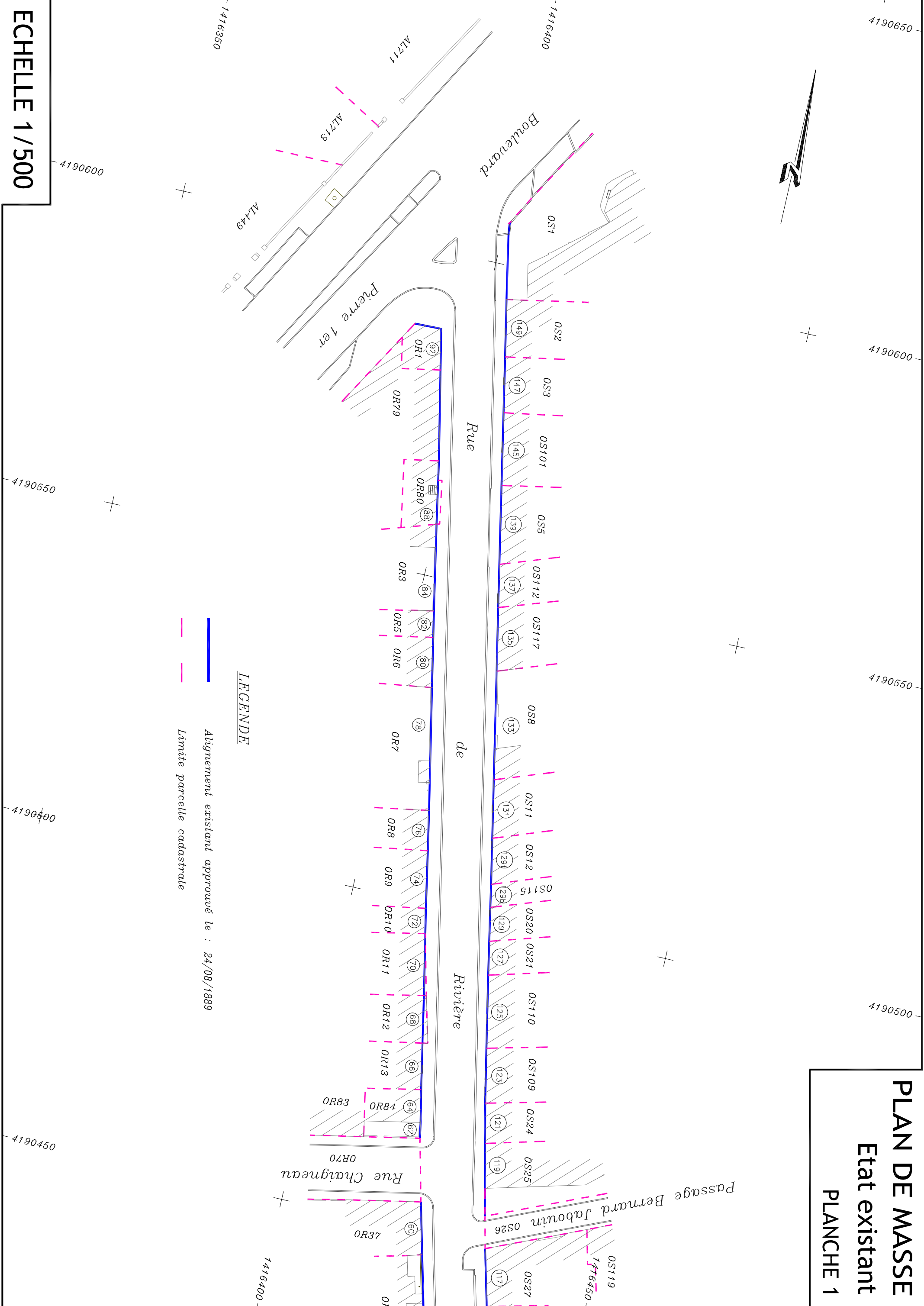
PLANCHE 1

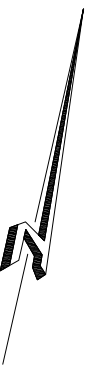


LEGENDE

- Alignement existant approuvé le : 24/08/1889
- - - Limite parcelle cadastrale

ECHELLE 1/500





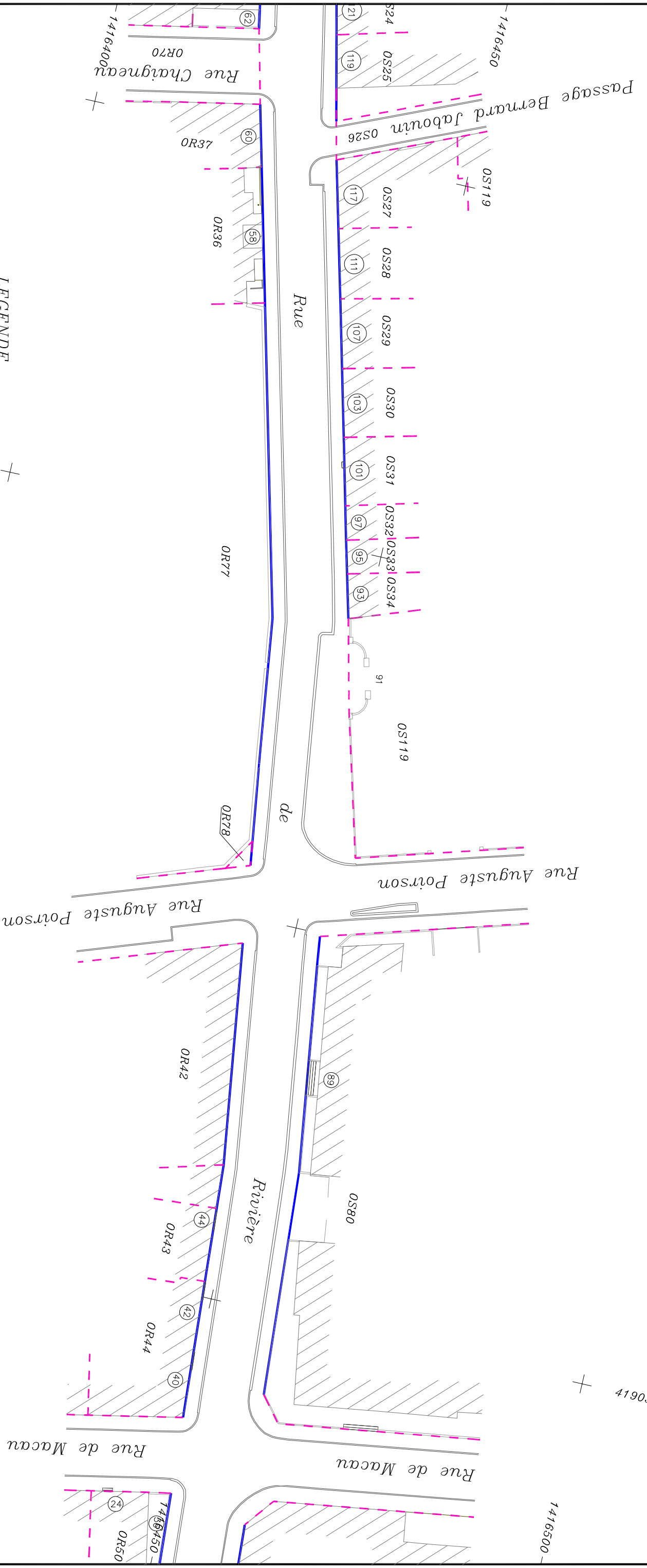
4190450

4190400

4190350

4190300

PLAN DE MASSE Etat existant PLANCHE 2



LEGENDE

— Alignment existant approuvé le : 24/08/1889

- - - Limite parcelle cadastrale

4190450

1416400

ECHELLE 1/500

4190400

4190350

4190300

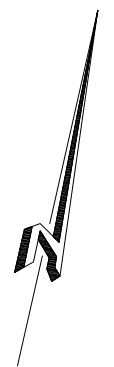
1416400

1416500

PLAN DE MASSE

Etat existant

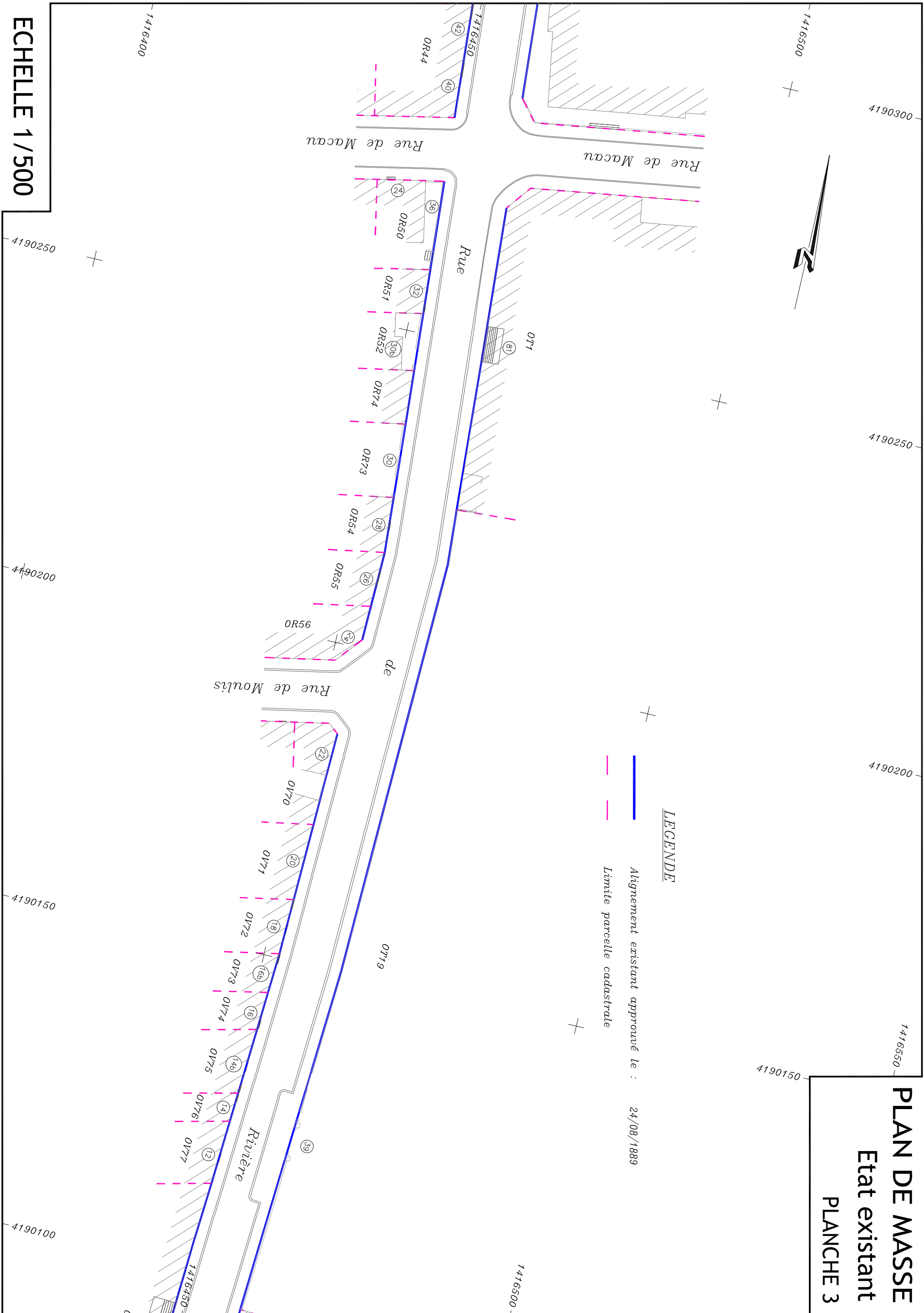
PLANCHE 3



LEGENDE

— Alignement existant approuvé le : 24/08/1889

- - - Limite parcelle cadastrale

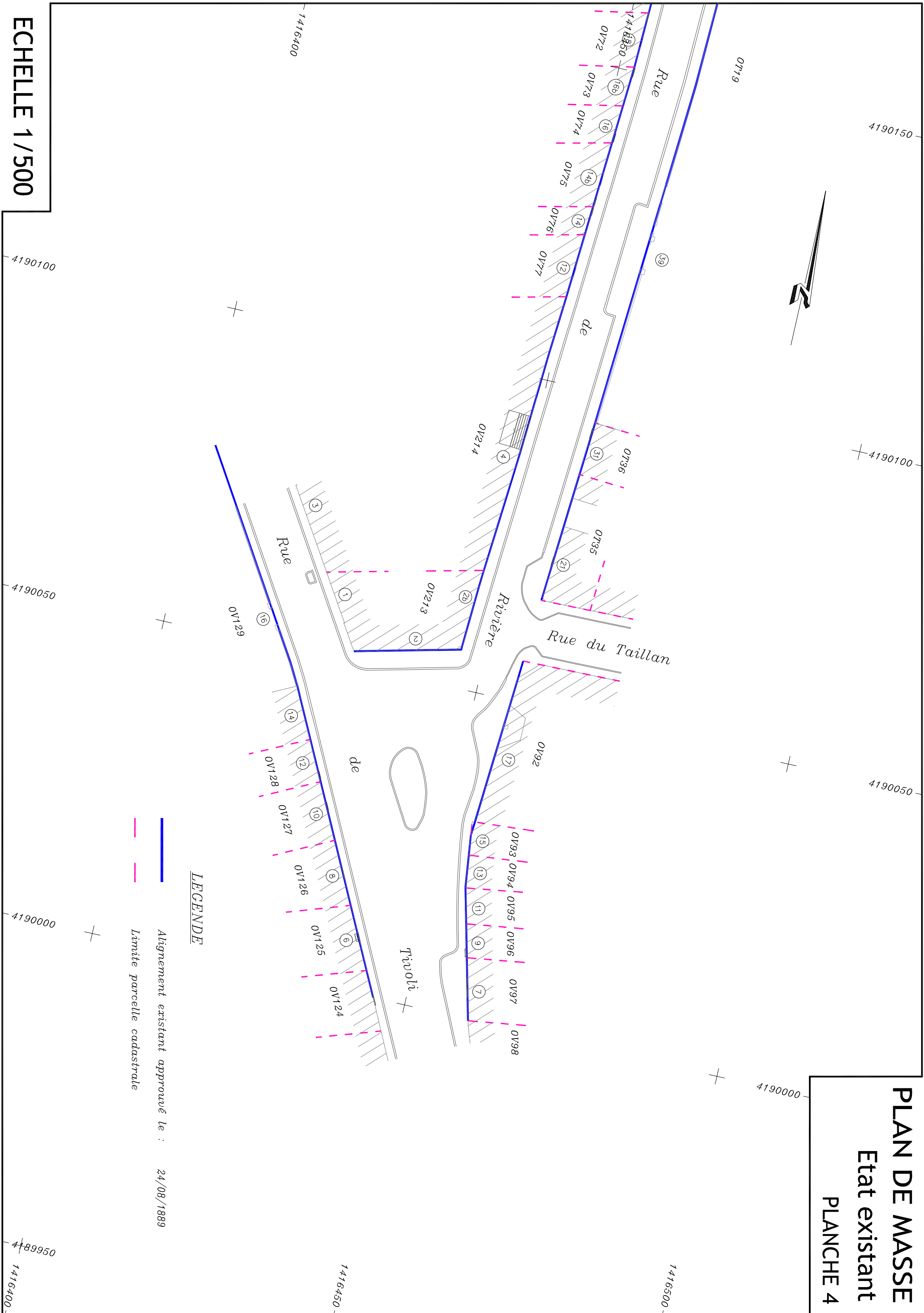
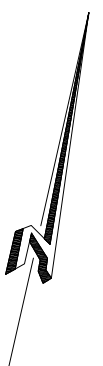


ECHELLE 1/500

PLAN DE MASSE

Etat existant

PLANCHE 4



ECHELLE 1/500