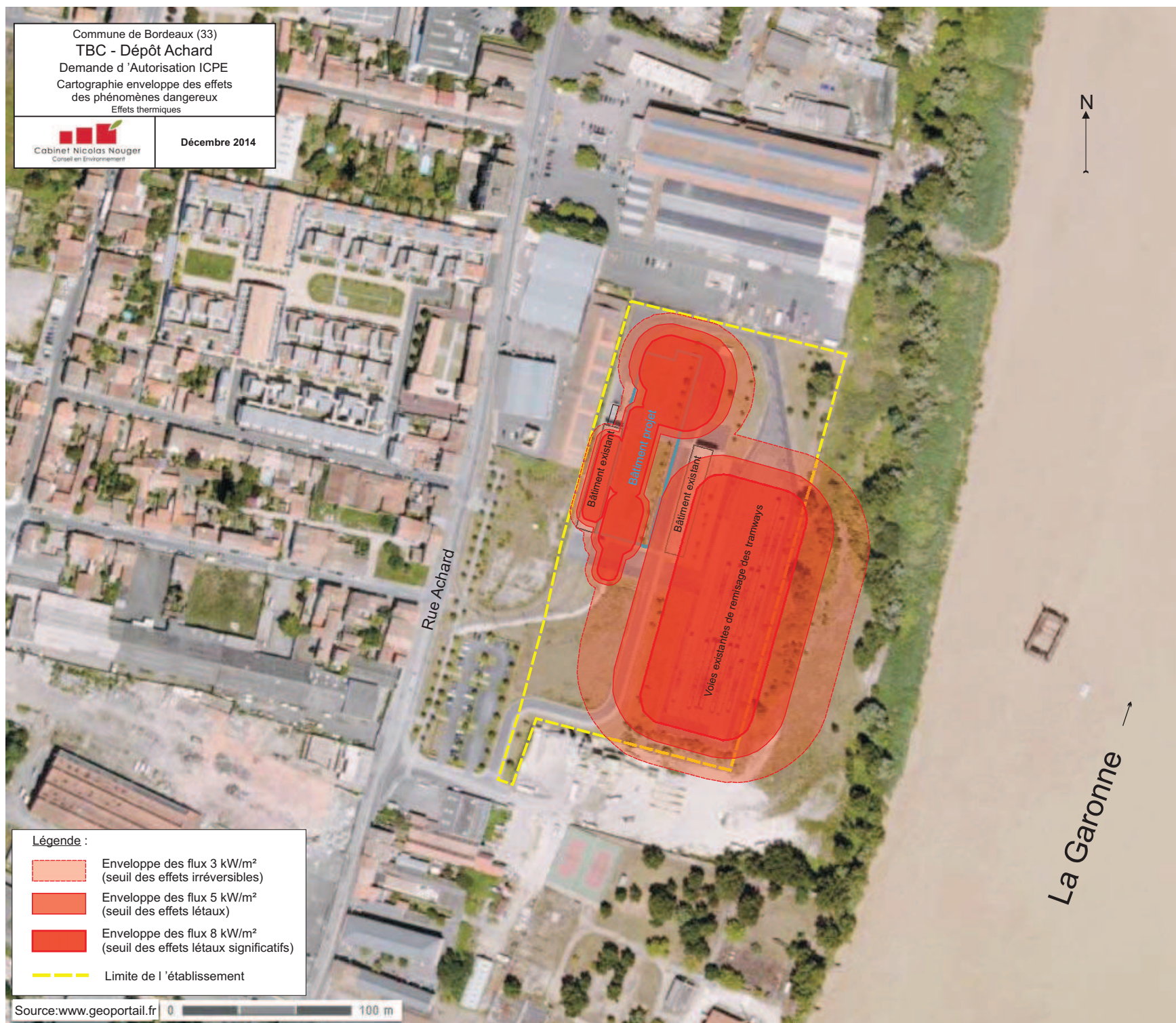


Commune de Bordeaux (33)
TBC - Dépôt Achard
Demande d'Autorisation ICPE
Cartographie enveloppe des effets
des phénomènes dangereux
Effets thermiques



Décembre 2014



Légende :





-  Enveloppe des flux 3 kW/m²
(seuil des effets irréversibles)
-  Enveloppe des flux 5 kW/m²
(seuil des effets létaux)
-  Enveloppe des flux 8 kW/m²
(seuil des effets létaux significatifs)
-  Limite de l'établissement

Planche PL1 - FLUX THERMIQUES - INCENDIE D'UNE RAME DE TRAMWAY DANS LA CABINE

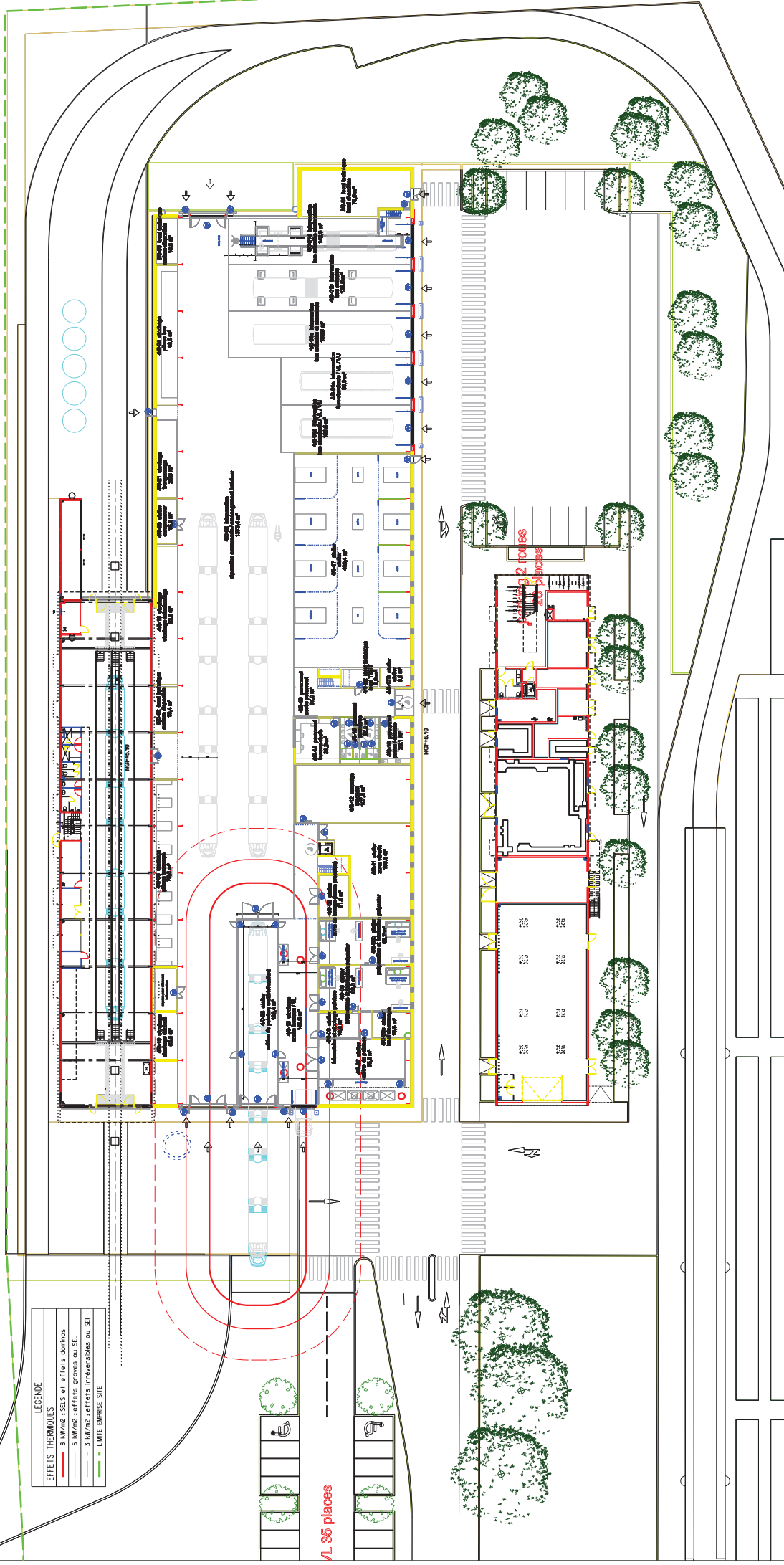


Planche PL2 - FLUX THERMIQUES - INCENDIE D'UN BUS A SOUFFLET DANS CABINE

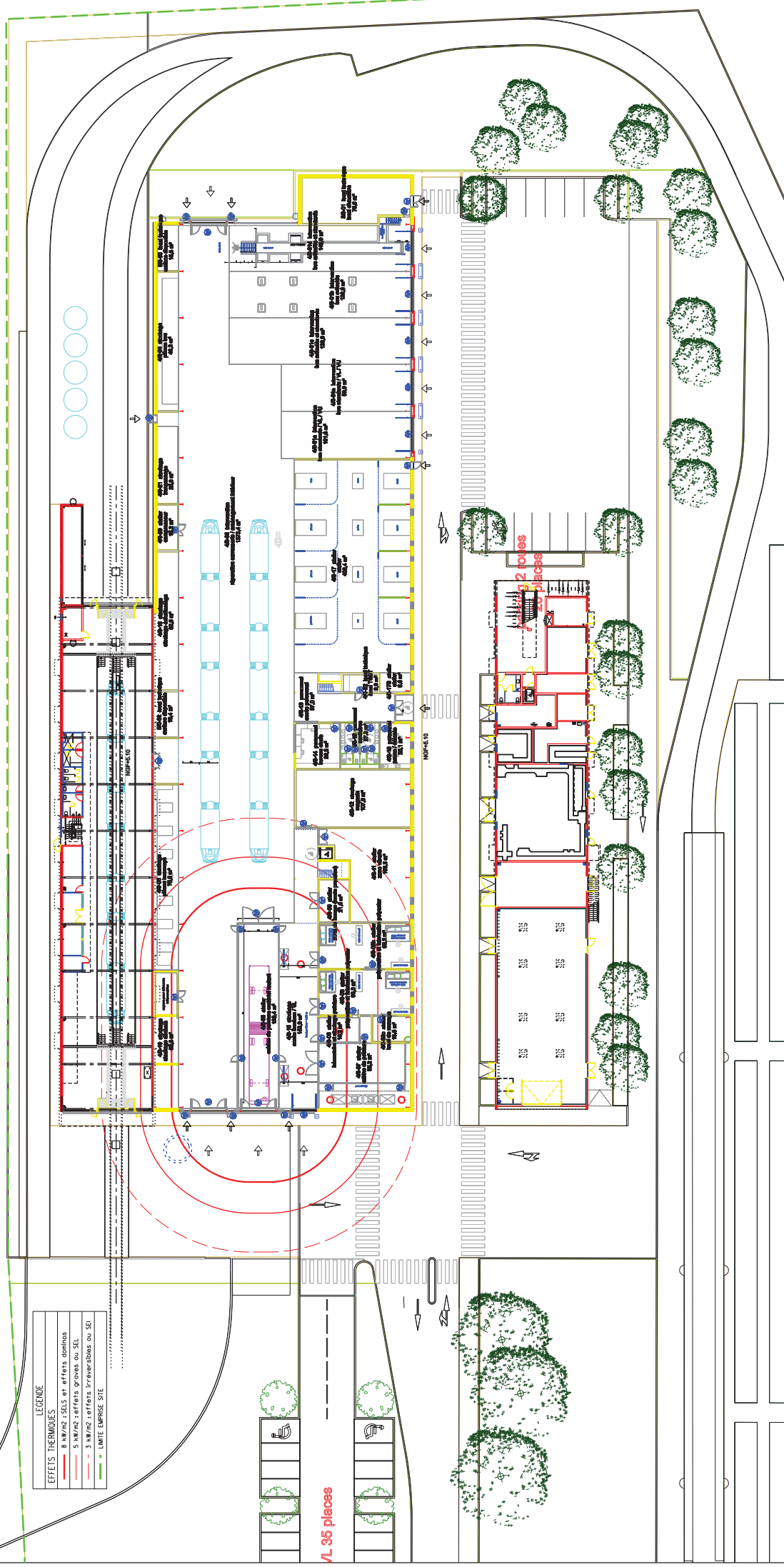


Planche PL3 - FLUX THERMIQUES - INCENDIE CABINE PEINTURE 2

LEGENDE

EFFETS THERMIQUES

- 8 kW/m² : SELS et effets domino
- 5 kW/m² : effets graves ou SEL
- 3 kW/m² : effets irréversibles ou SEI
- LIMITE EMPRISE SITE

aire de livraison

35 places

2 toiles

3 places

Incendie Cabine Peinture 2

Labels and Areas:

- 400-01 : 1000 m²
- 400-02 : 1000 m²
- 400-03 : 1000 m²
- 400-04 : 1000 m²
- 400-05 : 1000 m²
- 400-06 : 1000 m²
- 400-07 : 1000 m²
- 400-08 : 1000 m²
- 400-09 : 1000 m²
- 400-10 : 1000 m²
- 400-11 : 1000 m²
- 400-12 : 1000 m²
- 400-13 : 1000 m²
- 400-14 : 1000 m²
- 400-15 : 1000 m²
- 400-16 : 1000 m²
- 400-17 : 1000 m²
- 400-18 : 1000 m²
- 400-19 : 1000 m²
- 400-20 : 1000 m²
- 400-21 : 1000 m²
- 400-22 : 1000 m²
- 400-23 : 1000 m²
- 400-24 : 1000 m²
- 400-25 : 1000 m²
- 400-26 : 1000 m²
- 400-27 : 1000 m²
- 400-28 : 1000 m²
- 400-29 : 1000 m²
- 400-30 : 1000 m²
- 400-31 : 1000 m²
- 400-32 : 1000 m²
- 400-33 : 1000 m²
- 400-34 : 1000 m²
- 400-35 : 1000 m²
- 400-36 : 1000 m²
- 400-37 : 1000 m²
- 400-38 : 1000 m²
- 400-39 : 1000 m²
- 400-40 : 1000 m²
- 400-41 : 1000 m²
- 400-42 : 1000 m²
- 400-43 : 1000 m²
- 400-44 : 1000 m²
- 400-45 : 1000 m²
- 400-46 : 1000 m²
- 400-47 : 1000 m²
- 400-48 : 1000 m²
- 400-49 : 1000 m²
- 400-50 : 1000 m²
- 400-51 : 1000 m²
- 400-52 : 1000 m²
- 400-53 : 1000 m²
- 400-54 : 1000 m²
- 400-55 : 1000 m²
- 400-56 : 1000 m²
- 400-57 : 1000 m²
- 400-58 : 1000 m²
- 400-59 : 1000 m²
- 400-60 : 1000 m²
- 400-61 : 1000 m²
- 400-62 : 1000 m²
- 400-63 : 1000 m²
- 400-64 : 1000 m²
- 400-65 : 1000 m²
- 400-66 : 1000 m²
- 400-67 : 1000 m²
- 400-68 : 1000 m²
- 400-69 : 1000 m²
- 400-70 : 1000 m²
- 400-71 : 1000 m²
- 400-72 : 1000 m²
- 400-73 : 1000 m²
- 400-74 : 1000 m²
- 400-75 : 1000 m²
- 400-76 : 1000 m²
- 400-77 : 1000 m²
- 400-78 : 1000 m²
- 400-79 : 1000 m²
- 400-80 : 1000 m²
- 400-81 : 1000 m²
- 400-82 : 1000 m²
- 400-83 : 1000 m²
- 400-84 : 1000 m²
- 400-85 : 1000 m²
- 400-86 : 1000 m²
- 400-87 : 1000 m²
- 400-88 : 1000 m²
- 400-89 : 1000 m²
- 400-90 : 1000 m²
- 400-91 : 1000 m²
- 400-92 : 1000 m²
- 400-93 : 1000 m²
- 400-94 : 1000 m²
- 400-95 : 1000 m²
- 400-96 : 1000 m²
- 400-97 : 1000 m²
- 400-98 : 1000 m²
- 400-99 : 1000 m²
- 400-100 : 1000 m²

LEGENDE	
EFFETS THERMIQUES	
	8 kW/m ² : SELS et effets dominos
	5 kW/m ² : effets graves ou SEL
	3 kW/m ² : effets irréversibles ou SEI
	■ LIMITE EMPRISE SITE

✓ 35 places

[aire de livraison](#)

Planche PL4 - FLUX THERMIQUES - INCENDIE D'UNE RAME DE TRAMWAY DANS L'ATELIER

LEGENDE	
EFFETS THERMIQUES	
—	8 kW/m2 : SELS et effets dominos
- - -	5 kW/m2 : effets graves ou SEL
- - -	3 kW/m2 : effets irréversibles ou SEI
—	■ LIMITE EMPIRIQUE SITE

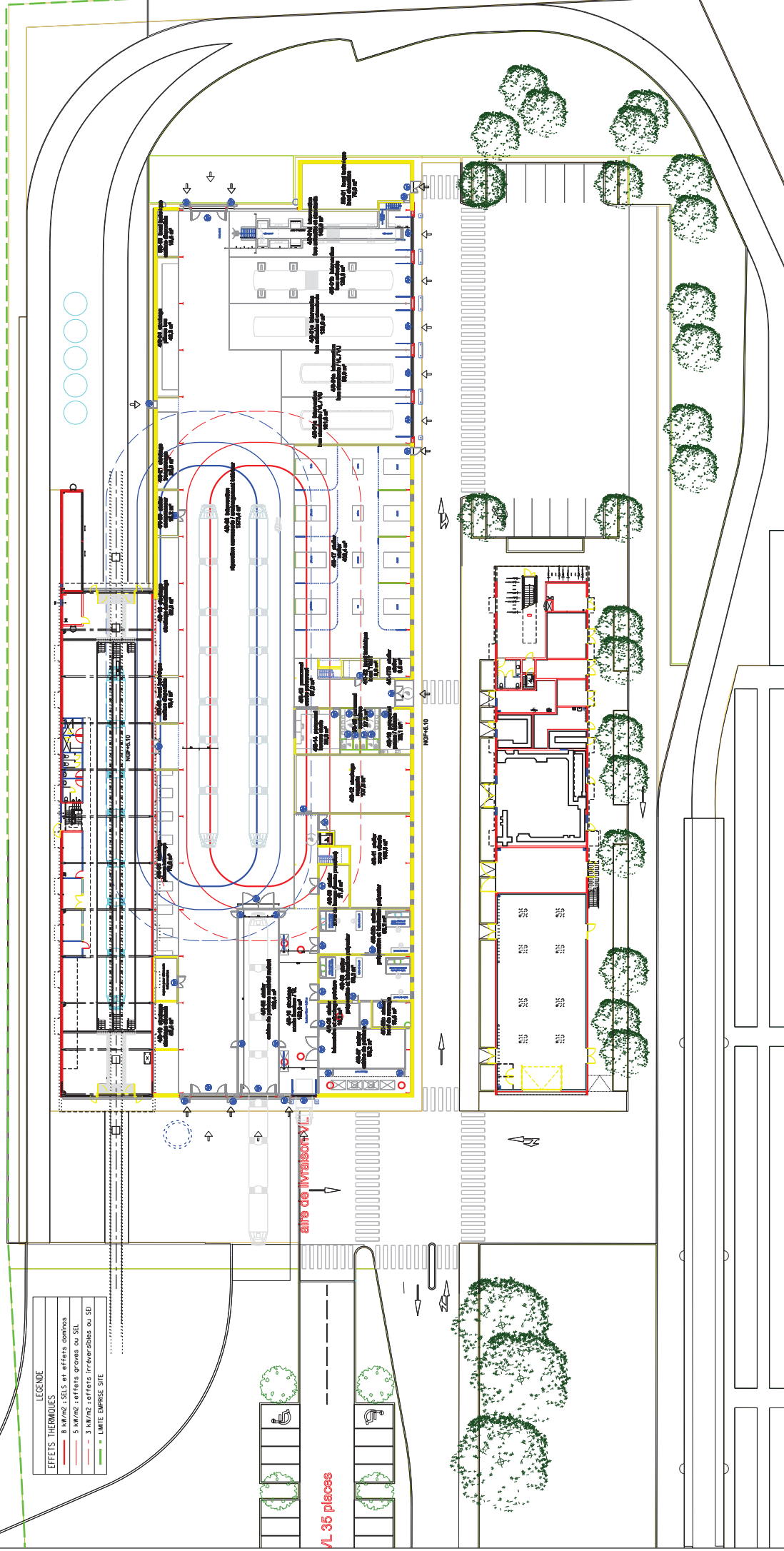


Planche PL5 - FLUX THERMIQUES - INCENDIE D'UN AUTOBUS A SOUFFLET

LEGENDE	
EFFETS THERMIQUES	
—	8 kW/m2 : SELS et effets dominos
---	5 kW/m2 : effets graves ou SEL
- - -	3 kW/m2 : effets irréversibles ou SEI
—	LIMITE EMPIRIQUE SITE

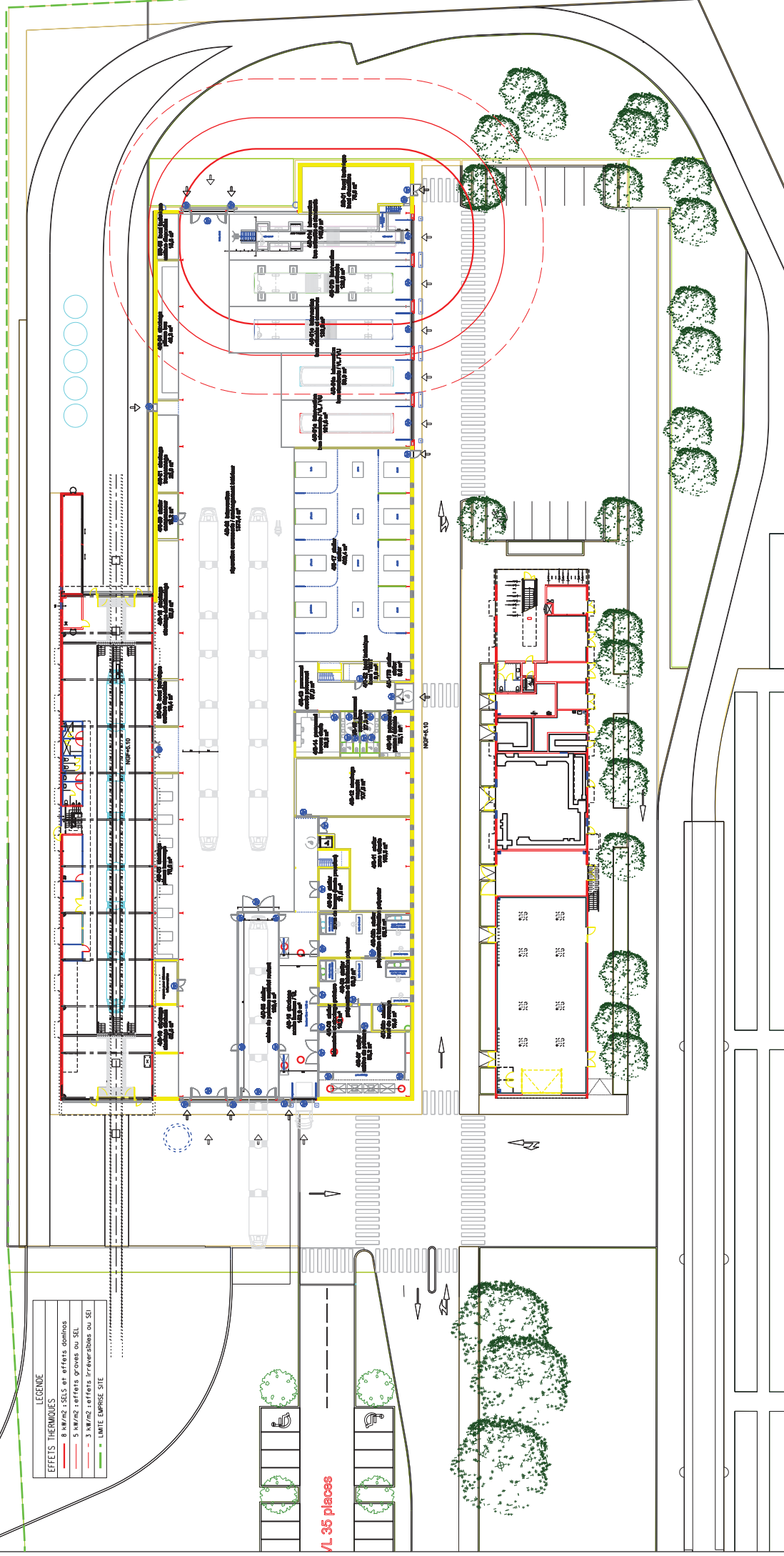


Planche PL6 - FLUX THERMIQUES - INCENDIE ZONE BUS (5 BUS)

Diagram illustrating the thermal flux analysis for a fire incident in the bus zone (Zone Bus, 5 buses) of the PL6 plan.

The diagram shows the layout of the bus zone, including the bus lanes, the bus stop area, and the surrounding buildings and infrastructure.

Key features and labels include:

- Zone Bus (5 BUS):** The area designated for bus parking and stopping.
- Incendie (Fire):** The location of the fire incident is marked.
- Flux Thermiques (Thermal Flux):** The diagram shows the distribution of thermal flux from the fire source, with color-coded areas representing different levels of heat exposure.
- Legende (Legend):** Defines the color coding for thermal flux levels:
 - 8 kW/m² : SELS et effets dominants (Red line)
 - 5 kW/m² : effets graves ou SEL (Orange line)
 - 3 kW/m² : effets irréversibles ou SEI (Yellow line)
 - LIMITE EMPIRIQUE SITE (Dashed line)
- Other Labels:** Various technical labels and dimensions are present throughout the diagram, such as "NBP-4.10", "NBP-4.11", "NBP-4.12", "NBP-4.13", "NBP-4.14", "NBP-4.15", "NBP-4.16", "NBP-4.17", "NBP-4.18", "NBP-4.19", "NBP-4.20", "NBP-4.21", "NBP-4.22", "NBP-4.23", "NBP-4.24", "NBP-4.25", "NBP-4.26", "NBP-4.27", "NBP-4.28", "NBP-4.29", "NBP-4.30", "NBP-4.31", "NBP-4.32", "NBP-4.33", "NBP-4.34", "NBP-4.35", "NBP-4.36", "NBP-4.37", "NBP-4.38", "NBP-4.39", "NBP-4.40", "NBP-4.41", "NBP-4.42", "NBP-4.43", "NBP-4.44", "NBP-4.45", "NBP-4.46", "NBP-4.47", "NBP-4.48", "NBP-4.49", "NBP-4.50", "NBP-4.51", "NBP-4.52", "NBP-4.53", "NBP-4.54", "NBP-4.55", "NBP-4.56", "NBP-4.57", "NBP-4.58", "NBP-4.59", "NBP-4.60", "NBP-4.61", "NBP-4.62", "NBP-4.63", "NBP-4.64", "NBP-4.65", "NBP-4.66", "NBP-4.67", "NBP-4.68", "NBP-4.69", "NBP-4.70", "NBP-4.71", "NBP-4.72", "NBP-4.73", "NBP-4.74", "NBP-4.75", "NBP-4.76", "NBP-4.77", "NBP-4.78", "NBP-4.79", "NBP-4.80", "NBP-4.81", "NBP-4.82", "NBP-4.83", "NBP-4.84", "NBP-4.85", "NBP-4.86", "NBP-4.87", "NBP-4.88", "NBP-4.89", "NBP-4.90", "NBP-4.91", "NBP-4.92", "NBP-4.93", "NBP-4.94", "NBP-4.95", "NBP-4.96", "NBP-4.97", "NBP-4.98", "NBP-4.99", "NBP-4.100", "NBP-4.101", "NBP-4.102", "NBP-4.103", "NBP-4.104", "NBP-4.105", "NBP-4.106", "NBP-4.107", "NBP-4.108", "NBP-4.109", "NBP-4.110", "NBP-4.111", "NBP-4.112", "NBP-4.113", "NBP-4.114", "NBP-4.115", "NBP-4.116", "NBP-4.117", "NBP-4.118", "NBP-4.119", "NBP-4.120", "NBP-4.121", "NBP-4.122", "NBP-4.123", "NBP-4.124", "NBP-4.125", "NBP-4.126", "NBP-4.127", "NBP-4.128", "NBP-4.129", "NBP-4.130", "NBP-4.131", "NBP-4.132", "NBP-4.133", "NBP-4.134", "NBP-4.135", "NBP-4.136", "NBP-4.137", "NBP-4.138", "NBP-4.139", "NBP-4.140", "NBP-4.141", "NBP-4.142", "NBP-4.143", "NBP-4.144", "NBP-4.145", "NBP-4.146", "NBP-4.147", "NBP-4.148", "NBP-4.149", "NBP-4.150", "NBP-4.151", "NBP-4.152", "NBP-4.153", "NBP-4.154", "NBP-4.155", "NBP-4.156", "NBP-4.157", "NBP-4.158", "NBP-4.159", "NBP-4.160", "NBP-4.161", "NBP-4.162", "NBP-4.163", "NBP-4.164", "NBP-4.165", "NBP-4.166", "NBP-4.167", "NBP-4.168", "NBP-4.169", "NBP-4.170", "NBP-4.171", "NBP-4.172", "NBP-4.173", "NBP-4.174", "NBP-4.175", "NBP-4.176", "NBP-4.177", "NBP-4.178", "NBP-4.179", "NBP-4.180", "NBP-4.181", "NBP-4.182", "NBP-4.183", "NBP-4.184", "NBP-4.185", "NBP-4.186", "NBP-4.187", "NBP-4.188", "NBP-4.189", "NBP-4.190", "NBP-4.191", "NBP-4.192", "NBP-4.193", "NBP-4.194", "NBP-4.195", "NBP-4.196", "NBP-4.197", "NBP-4.198", "NBP-4.199", "NBP-4.200", "NBP-4.201", "NBP-4.202", "NBP-4.203", "NBP-4.204", "NBP-4.205", "NBP-4.206", "NBP-4.207", "NBP-4.208", "NBP-4.209", "NBP-4.210", "NBP-4.211", "NBP-4.212", "NBP-4.213", "NBP-4.214", "NBP-4.215", "NBP-4.216", "NBP-4.217", "NBP-4.218", "NBP-4.219", "NBP-4.220", "NBP-4.221", "NBP-4.222", "NBP-4.223", "NBP-4.224", "NBP-4.225", "NBP-4.226", "NBP-4.227", "NBP-4.228", "NBP-4.229", "NBP-4.230", "NBP-4.231", "NBP-4.232", "NBP-4.233", "NBP-4.234", "NBP-4.235", "NBP-4.236", "NBP-4.237", "NBP-4.238", "NBP-4.239", "NBP-4.240", "NBP-4.241", "NBP-4.242", "NBP-4.243", "NBP-4.244", "NBP-4.245", "NBP-4.246", "NBP-4.247", "NBP-4.248", "NBP-4.249", "NBP-4.250", "NBP-4.251", "NBP-4.252", "NBP-4.253", "NBP-4.254", "NBP-4.255", "NBP-4.256", "NBP-4.257", "NBP-4.258", "NBP-4.259", "NBP-4.260", "NBP-4.261", "NBP-4.262", "NBP-4.263", "NBP-4.264", "NBP-4.265", "NBP-4.266", "NBP-4.267", "NBP-4.268", "NBP-4.269", "NBP-4.270", "NBP-4.271", "NBP-4.272", "NBP-4.273", "NBP-4.274", "NBP-4.275", "NBP-4.276", "NBP-4.277", "NBP-4.278", "NBP-4.279", "NBP-4.280", "NBP-4.281", "NBP-4.282", "NBP-4.283", "NBP-4.284", "NBP-4.285", "NBP-4.286", "NBP-4.287", "NBP-4.288", "NBP-4.289", "NBP-4.290", "NBP-4.291", "NBP-4.292", "NBP-4.293", "NBP-4.294", "NBP-4.295", "NBP-4.296", "NBP-4.297", "NBP-4.298", "NBP-4.299", "NBP-4.300", "NBP-4.301", "NBP-4.302", "NBP-4.303", "NBP-4.304", "NBP-4.305", "NBP-4.306", "NBP-4.307", "NBP-4.308", "NBP-4.309", "NBP-4.310", "NBP-4.311", "NBP-4.312", "NBP-4.313", "NBP-4.314", "NBP-4.315", "NBP-4.316", "NBP-4.317", "NBP-4.318", "NBP-4.319", "NBP-4.320", "NBP-4.321", "NBP-4.322", "NBP-4.323", "NBP-4.324", "NBP-4.325", "NBP-4.326", "NBP-4.327", "NBP-4.328", "NBP-4.329", "NBP-4.330", "NBP-4.331", "NBP-4.332", "NBP-4.333", "NBP-4.334", "NBP-4.335", "NBP-4.336", "NBP-4.337", "NBP-4.338", "NBP-4.339", "NBP-4.340", "NBP-4.341", "NBP-4.342", "NBP-4.343", "NBP-4.344", "NBP-4.345", "NBP-4.346", "NBP-4.347", "NBP-4.348", "NBP-4.349", "NBP-4.350", "NBP-4.351", "NBP-4.352", "NBP-4.353", "NBP-4.354", "NBP-4.355", "NBP-4.356", "NBP-4.357", "NBP-4.358", "NBP-4.359", "NBP-4.360", "NBP-4.361", "NBP-4.362", "NBP-4.363", "NBP-4.364", "NBP-4.365", "NBP-4.366", "NBP-4.367", "NBP-4.368", "NBP-4.369", "NBP-4.370", "NBP-4.371", "NBP-4.372", "NBP-4.373", "NBP-4.374", "NBP-4.375", "NBP-4.376", "NBP-4.377", "NBP-4.378", "NBP-4.379", "NBP-4.380", "NBP-4.381", "NBP-4.382", "NBP-4.383", "NBP-4.384", "NBP-4.385", "NBP-4.386", "NBP-4.387", "NBP-4.388", "NBP-4.389", "NBP-4.390", "NBP-4.391", "NBP-4.392", "NBP-4.393", "NBP-4.394", "NBP-4.395", "NBP-4.396", "N

Planche PL6 - FLUX THERMIQUES - INCENDIE ZONE BUS (5 BUS)

LEGENDE

EFFETS THERMIQUES

- 8 kW/m2 : SELS et effets dominos
- 5 kW/m2 : effets graves ou SEL
- 3 kW/m2 : effets irréversibles ou SEI
- LIMITE EMPIRIQUE SITE

Room Labels and Areas:

- 40-01 : 100.00 m²
- 40-02 : 100.00 m²
- 40-03 : 100.00 m²
- 40-04 : 100.00 m²
- 40-05 : 100.00 m²
- 40-06 : 100.00 m²
- 40-07 : 100.00 m²
- 40-08 : 100.00 m²
- 40-09 : 100.00 m²
- 40-10 : 100.00 m²
- 40-11 : 100.00 m²
- 40-12 : 100.00 m²
- 40-13 : 100.00 m²
- 40-14 : 100.00 m²
- 40-15 : 100.00 m²
- 40-16 : 100.00 m²
- 40-17 : 100.00 m²
- 40-18 : 100.00 m²
- 40-19 : 100.00 m²
- 40-20 : 100.00 m²
- 40-21 : 100.00 m²
- 40-22 : 100.00 m²
- 40-23 : 100.00 m²
- 40-24 : 100.00 m²
- 40-25 : 100.00 m²
- 40-26 : 100.00 m²
- 40-27 : 100.00 m²
- 40-28 : 100.00 m²
- 40-29 : 100.00 m²
- 40-30 : 100.00 m²
- 40-31 : 100.00 m²
- 40-32 : 100.00 m²
- 40-33 : 100.00 m²
- 40-34 : 100.00 m²
- 40-35 : 100.00 m²
- 40-36 : 100.00 m²
- 40-37 : 100.00 m²
- 40-38 : 100.00 m²
- 40-39 : 100.00 m²
- 40-40 : 100.00 m²
- 40-41 : 100.00 m²
- 40-42 : 100.00 m²
- 40-43 : 100.00 m²
- 40-44 : 100.00 m²
- 40-45 : 100.00 m²
- 40-46 : 100.00 m²
- 40-47 : 100.00 m²
- 40-48 : 100.00 m²
- 40-49 : 100.00 m²
- 40-50 : 100.00 m²
- 40-51 : 100.00 m²
- 40-52 : 100.00 m²
- 40-53 : 100.00 m²
- 40-54 : 100.00 m²
- 40-55 : 100.00 m²
- 40-56 : 100.00 m²
- 40-57 : 100.00 m²
- 40-58 : 100.00 m²
- 40-59 : 100.00 m²
- 40-60 : 100.00 m²
- 40-61 : 100.00 m²
- 40-62 : 100.00 m²
- 40-63 : 100.00 m²
- 40-64 : 100.00 m²
- 40-65 : 100.00 m²
- 40-66 : 100.00 m²
- 40-67 : 100.00 m²
- 40-68 : 100.00 m²
- 40-69 : 100.00 m²
- 40-70 : 100.00 m²
- 40-71 : 100.00 m²
- 40-72 : 100.00 m²
- 40-73 : 100.00 m²
- 40-74 : 100.00 m²
- 40-75 : 100.00 m²
- 40-76 : 100.00 m²
- 40-77 : 100.00 m²
- 40-78 : 100.00 m²
- 40-79 : 100.00 m²
- 40-80 : 100.00 m²
- 40-81 : 100.00 m²
- 40-82 : 100.00 m²
- 40-83 : 100.00 m²
- 40-84 : 100.00 m²
- 40-85 : 100.00 m²
- 40-86 : 100.00 m²
- 40-87 : 100.00 m²
- 40-88 : 100.00 m²
- 40-89 : 100.00 m²
- 40-90 : 100.00 m²
- 40-91 : 100.00 m²
- 40-92 : 100.00 m²
- 40-93 : 100.00 m²
- 40-94 : 100.00 m²
- 40-95 : 100.00 m²
- 40-96 : 100.00 m²
- 40-97 : 100.00 m²
- 40-98 : 100.00 m²
- 40-99 : 100.00 m²
- 40-100 : 100.00 m²

Other Labels:

- 35 places
- 5 BUS
- INCENDIE
- FLUX THERMIQUES
- LIMITE EMPIRIQUE SITE

