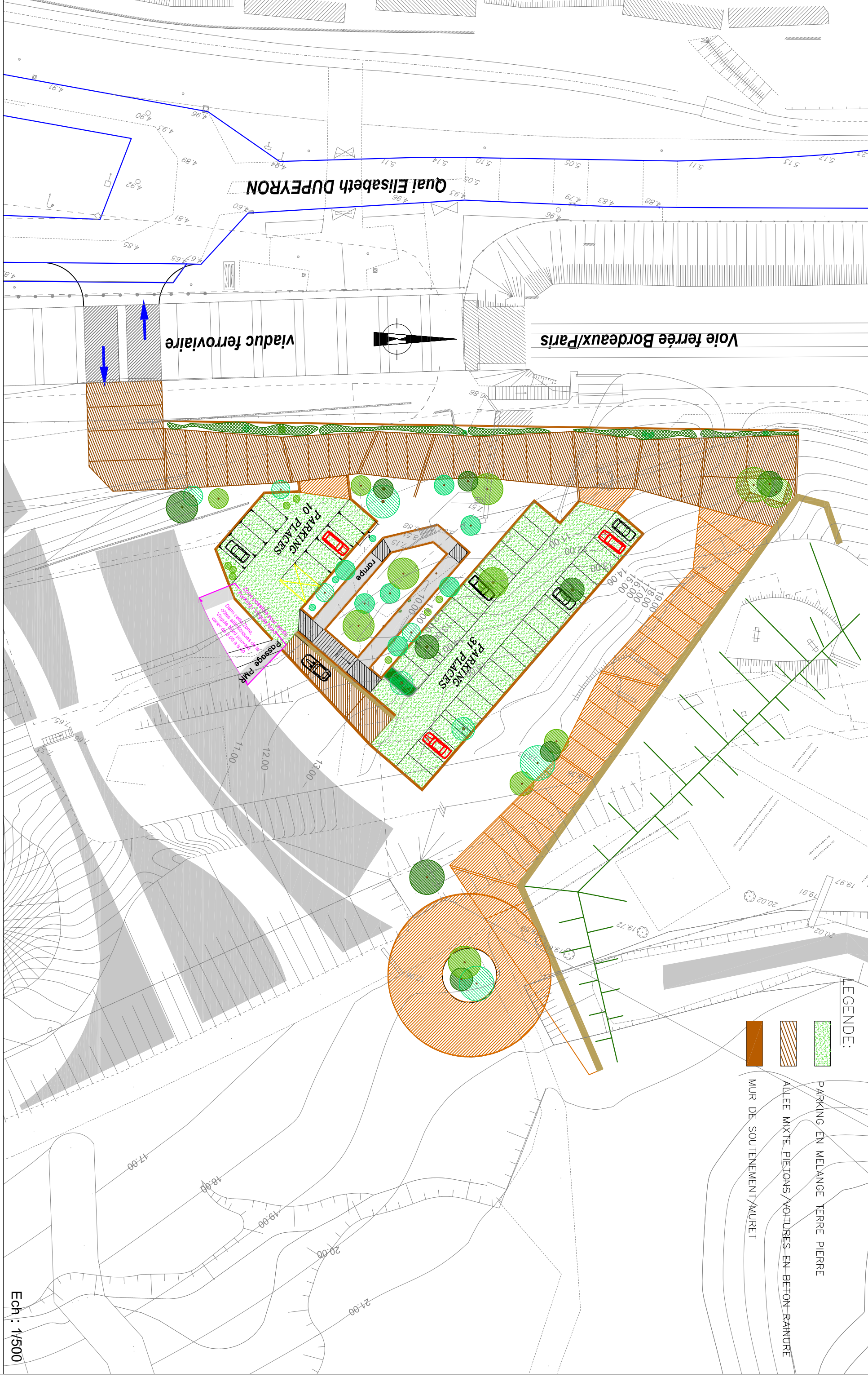





- Pièce D -

Plan général des travaux

**Desserte du Parc de L'Ermitage
Commune de Lormont**



LEGENDE:

-  PARKING EN MELANGE TERRE PIERRE
-  ALLEE MIXTE PIETONS/VOITURES- EN BETON-RAINURE
-  MUR DE SOUTÈNEMENT /MURET